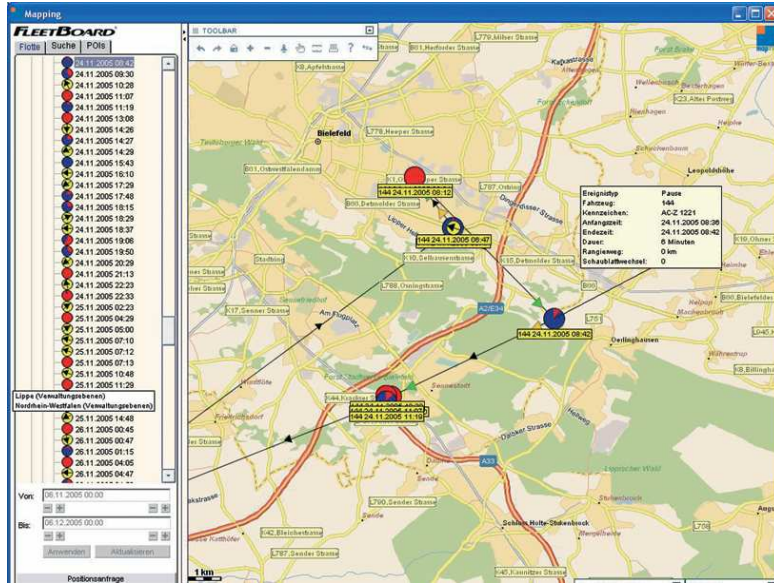


MapTP Case Studies: FleetBoard – DaimlerChrysler's Fleet Management System



The FleetBoard user, thanks to MapTP, is able to keep an eye on an entire vehicle fleet travelling on four continents. The exact position of every freight vehicle is pinpointed on respective maps. Each individual route can be tracked online and associated information can be accessed, including details of stops. Within the main menu the user can select the information to be displayed graphically on the maps. Using this function, it is possible to show the position of each vehicle in relation to key places, such as the client's address. Useful local information, such as the location of filling stations, parking and service areas as well as Mercedes service stations is already incorporated into the maps. Other points of interest to individual clients can be added by point-and-click. The visual presentation of the information this way is more attractive than providing raw data.

MapTP uses vector streaming technology. This ensures brilliant performance; quality and the outstanding interactive characteristics enable user-friendly, visual fleet management. The execution of interactive commands, such as displaying individual routes or vehicle groups, is shown with superb visual clarity. The comfortable interface enables MapTP to be incorporated so as to provide a quick, efficient and stable FleetBoard fleet management service with functions that can be further developed. DaimlerChrysler FleetBoard Services GmbH hosts the system itself on Windows NT. From the start, MapTP basic technology was specifically adapted in close cooperation with DaimlerChrysler to give it the specific requirements needed by a fleet management system. Since then the MapTP team has constantly developed it to meet ever-increasing requirements.



In their own words:

"Since 1999 Mapsolute has been our reliable business partner. During this long business relationship we could always count on the flexibility and competence of the Mapsolute team. Mapsolute contributed significantly to the outstanding quality of the product and guarantees – as we do – the quality."

Dr.-Ing. Christian Ballarin
Manager Product
Management

Facts & Figures:

About DaimlerChrysler

■ Daimler Chrysler Services FleetBoard GmbH is wholly owned by DaimlerChrysler AG. The company develops telematics based Internet services for the modern management of vehicles and transport. The services are manufacturer independent. At this time more than 25,000 vehicles of all makes are equipped with this additional service. The company's headquarters are in Stuttgart with branches in Wörth, Utrecht, and Birmingham. The company expects strong growth within the next few years.
URL: <http://www.fleetboard.com>

Integrated MapTP Services

- MapTP Geocoding Service
- FB Mapping Service (custom development for DaimlerChrysler Services FleetBoard GmbH)
- FB POI Service (custom development for DaimlerChrysler Services FleetBoard GmbH)

Technical Implementation:

Integration of MapTP services into the FleetBoard service center is implemented via XML/SOAP. The solution enables mobile real time communication between operator and equipped vehicles via SMS on national GSM networks. An IBM application server works in conjunction with an XML database system (Tamino XML Server from Software AG) to provide fleet management. Business logic as well as display layer are based on Java. Connected transport companies only need a browser to be able to access the application.

Hosting: Hosting is provided by DaimlerChrysler Services FleetBoard GmbH via Windows NT.